

# OFFICE SPACES AND MEETING ROOM - TO LET

**RADFORD HOUSE  
STAFFORD PARK 7  
TELFORD  
SHROPSHIRE  
TF3 3BQ**

///dame.romantics.ties



Radford House comprises an efficient, “no fuss” self-contained two storey office building on a private site. The property overlooks the M54 motorway in an established, easily accessible business park known as Stafford Park in Telford, Shropshire. Each floor has w/c and kitchen facilities.

Suites range from single person suites to interconnected larger opportunities. The office premises benefit from inclusive, flexible terms, ample allocated and shared parking and fibre broadband. Current availability is shown below.

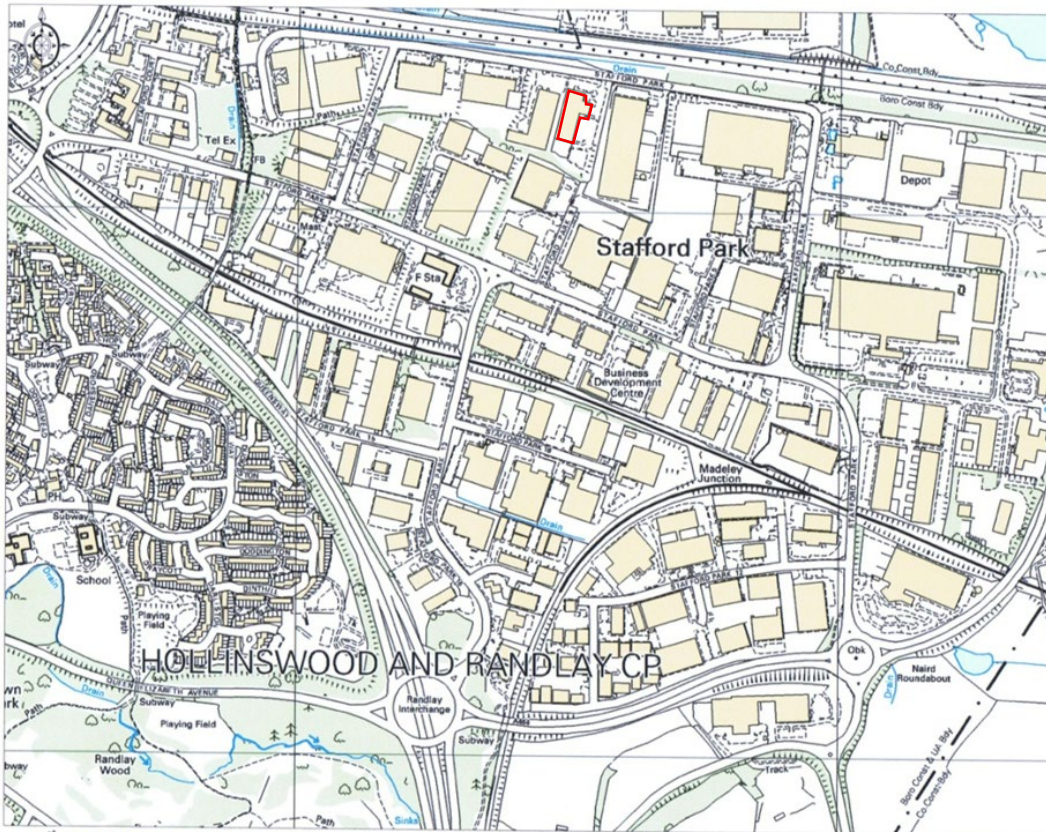
For further information or to arrange to visit, please contact Anthony Wiggins on 01952 603303 or Erin Beards on 07534 687232.

Subject to Contract / Details updated 04/26 / EPC E-108

Current Availability:					
Suite	Size (sq.ft)	Size (sq.m)	All Inclusive Rent (pcm)	Allocated Parking (No of spaces)	Availability
Suite 1c	1,329	123.46	£2,176.24	6	AVAILABLE
Suite 2g & Meeting Room	1,272	118.17	£2,083.33	9	AVAILABLE
Suite 2c	173	16.7	£360.42	2	AVAILABLE
Suite 2d	200	18.58	£416.67	2	AVAILABLE
Suite 2a	344	31.9	£717.00	3	AVAILABLE

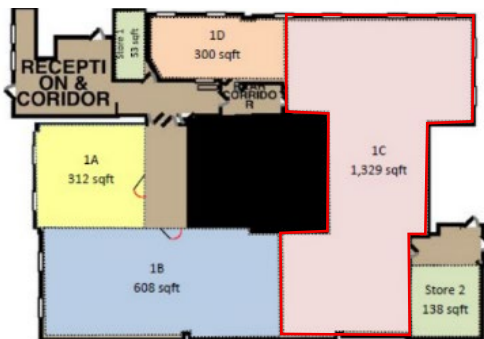
**WIGGINS LOCKETT THOMPSON LTD**  
73 High Street, Madeley  
Telford, Shropshire TF7 5AH  
Tel: 01952 603303/01902 229550  
enquiries@wltcommercial.co.uk  
wltcommercial.co.uk



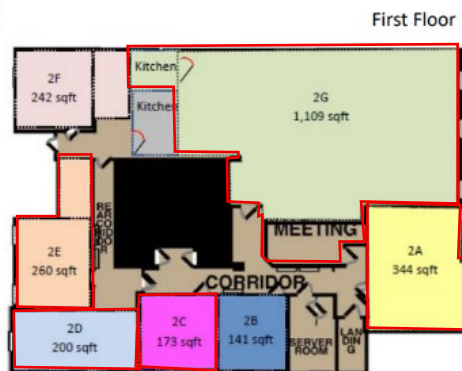


© Crown Copyright 2007. All rights reserved. Licence number 10002049. Plotted Scale - 1:10000

*This map was created with Promap*



Ground Floor



First Floor

Indicative Plans Only  
DO NOT SCALE

**IMPORTANT NOTICE**

Wiggins Lockett Thompson Ltd. for themselves and for the vendors or lessors of this property whose agents they are give notice that:

- (i) the particulars are set out as a general outline only for the guidance of intending purchasers or lessees and do not constitute nor constitute part of an offer or contract.
- (ii) all descriptions, dimensions, references to condition and necessary permissions for use and occupation and other details are given in good faith and are believed to be correct but any intending purchasers or tenants should not rely on them as statements or representations of fact but must satisfy themselves by inspection or otherwise as to the correctness of each of them.
- (iii) no person in the employment of Wiggins Lockett Thompson Ltd. has any authority to make or give any representation or warranty whatever in relation to this property.
- (iv) all rentals and prices are quoted exclusive of VAT.
- (v) the reference to any plant, machinery, equipment, fixtures and fittings at the property shall not constitute a representation (unless otherwise stated) as to its state and condition or that it is capable of fulfilling its intended function. Prospective purchasers/tenants should satisfy themselves as to the fitness of such items for their requirements.
- (vi) Any movable contents, fixtures and fittings referred to in these particulars (including any shown in photographs) are excluded from the sale/letting, unless stated otherwise.